



**MAKE TRACKS  
FOR THE WILD**

## SNOWSPORTS LESSONS

Whether you are looking for Alpine Skiing, Snowboarding, Cross Country Skiing or Snowshoeing, the Mt Baw Baw Snowsports team have you covered. The highly trained team of professionals from around the world are ready to offer your group a customised mountain experience. The flexible booking options of three available times per day, each consisting of 2 hour lessons, make it easy to find a time that suits you best. From beginners to advanced, the snowsports team will ensure everyone has a great time on the mountain.



# SNOWSPORTS LESSONS

## ALPINE SKI LESSON & LIFT TICKET

\$107

Energy Required:



Difficulty:



Age Range:

6 Years +

Duration:

2 Hours

Group Instructor Ratio:

10:1

Group Leader:

Not Required to Attend

Availability:

Monday to Friday

10:00am, 12:30pm & 2:30pm



Are you looking for a fun and safe way to introduce your students to skiing? Our school group ski lessons are the perfect solution! Qualified instructors will guide students of all ski levels through a fun and playful environment during a two-hour lesson. The lesson includes an all-day lift ticket, so your students can spend as much time on the slopes as possible. The maximum instructor ratio is 1:10 to ensure a safe setting and that each student gets the attention they need to succeed.

## SNOWBOARD LESSON & LIFT TICKET

\$124

Energy Required:



Difficulty:



Age Range:

8 Years +

Duration:

2 Hours

Group Instructor Ratio:

8:1

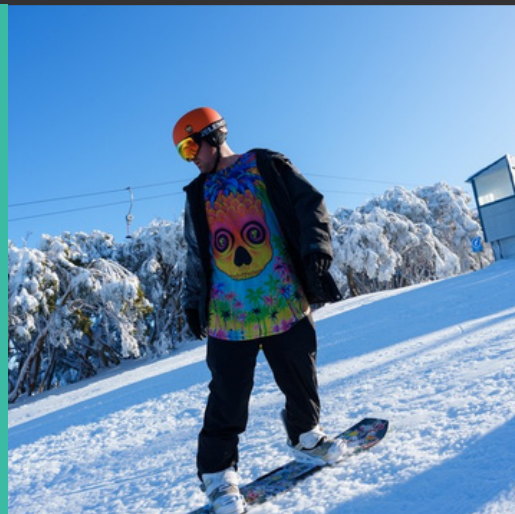
Group Leader:

Not Required to Attend

Availability:

Monday to Friday

10:00am, 12:30pm & 2:30pm



Are you looking for a fun way to get your students into snowboarding? Our group snowboard lessons are a great solution! Certified instructors will guide riders of all levels through a fun and playful environment during a two-hour lesson. The lesson includes an all day lift ticket, so your students can hit the slopes as much as they would like. The maximum instructor ratio is 1:8 to ensure a safe setting, and to ensure each student gets the attention they need to master snowboarding!

## CROSS COUNTRY SKI LESSON

\$70

Energy Required:



Difficulty:



Age Range:

7 Years +

Duration:

2 Hours

Group Instructor Ratio:

10:1

Group Leader:

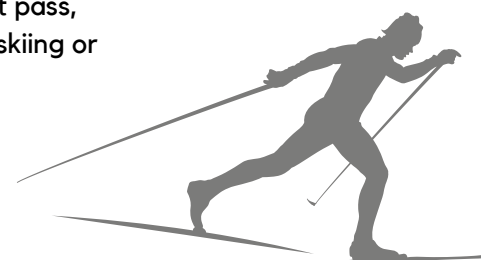
Not Required to Attend

Availability:

Monday to Friday

10:00am, 12:30pm & 2:30pm

Our group lessons for schools are the perfect way to introduce your students to cross country skiing. Experienced instructors will lead students of all levels of expertise through a two-hour lesson in a fun and energetic environment. The maximum instructor ratio is 10:1 to ensure a safe setting and individualised attention for each student to excel. Cross country skiing does not require a lift pass, therefore is a more budget friendly option than skiing or snowboarding.



# ALPINE LEARNING PROGRAM

The Alpine Learning Program is a unique educational experience designed for school groups visiting Mt Baw Baw. The program offers a range of alpine-related topics, including Ski Resort Operations, and information about the Alpine Environment. With the Alpine Learning Program, your school group's Winter activity can be more than just a fun experience - it can also provide added educational value. Choose your topic of interest and enhance your school group's snow trip with our Alpine Learning Program!



## ALPINE DINGOES & THE ALPINE ENVIRONMENT

\$38

Energy Required:



Difficulty:



Age Range:

6 Years +

Duration:

1 Hour

Group Instructor Ratio:

20:1

Group Leader:

Not Required to Attend

### Alpine Dingoes

Meet our friendly dingoes Warragul and Rowdy and learn about their role as the apex predators in a unique ecosystem.

OR

### Alpine Environment (Suitable for VCE Syllabus)

This learning program provides the students with the opportunity to broaden their knowledge of Australia's Alpine Environments in an educational development focused session.

**Please note** - This program does not include a meet with the Dingoes.

## MOUNTAIN AWARENESS WITH SKI PATROL

\$18

Energy Required:



Difficulty:



Age Range:

6 Years +

Duration:

1 Hour

Group Instructor Ratio:

40:1

Group Leader:

Not Required to Attend

Availability:

Monday to Friday



This program, overseen by our Ski Patrol team, will educate students on how to stay safe while skiing or snowboarding. The Alpine Responsibility Code, which all skiers and snowboarders should follow, will be covered. As well as how the Ski Patrol teams work to ensure the safety of the slopes. The program will conclude with a demonstration of a rescue operation and a Q&A session.

# MOUNTAIN FUN ACTIVITIES

The Mountain Fun Activities are perfect add-ons for your students snow trip! Whether hitting the toboggan park or enjoying evening entertainment, give your group an unforgettable adventure with the Mountain Fun options!



MAKE TRACKS  
FOR THE FIRST TIME

# MOUNTAIN FUN ACTIVITIES

## TOBOGGAN SESSION PASS

\$12

Energy Required:



Difficulty:



Age Range:

6 Years +

Duration:

All day

Group Instructor Ratio:

N/A

Group Leader:

Required

Availability:

Monday to Friday  
Toboggan Session Times



Tobogganing is an affordable and effortless activity that offers an exciting experience of sliding down a snowy hill. At Mt Baw Baw, the toboggan parks have a magic carpet that transports your students to the top of the slope, allowing them to enjoy more toboggan runs without feeling tired. The group entry pass for the toboggan park includes access to the toboggan park, toboggan hire not included.

## TWILIGHT HIKE

\$28

Energy Required:



Difficulty:



Age Range:

8 Years +

Duration:

1 Hour

Group Instructor Ratio:

20:1

Group Leader:

Required

Availability:

Monday to Friday  
5:30pm & 6:30pm

Are you looking for a fun and educational evening activity for your school group? A hike through the alpine environment at twilight leading up to the top of big hill to see one of the best nighttime views of the mountain and surrounding valley, learn about some of the flora and fauna that make up Mt Baw Baw during this walk.

This product requires a minimum of 30 attendees.



## NIGHT SKI

\$32

Energy Required:



Difficulty:



Age Range:

8 Years +

Duration:

1 Hour

Group Instructor Ratio:

N/A

Group Leader:

Required

Availability:

Monday to Friday  
7:00pm

The resort will run the lifts and turn on the floodlights. A great way to give your students a fun evening activity, participate in a timed snowsports race set up by one of our skilled instructors either for fun or in a competitive setting. You can choose from Alpine Skiing, Snowboarding, Cross Country Skiing, based on your group's skill and fitness level.

This product requires a minimum of 40 attendees and is only available to groups with sufficient experience in the related discipline.

- Alpine Skiing (Blue Level or minimum two lessons)
- Snowboarding (Blue Level or minimum two lessons)
- Cross Country Skiing (comfortable classic or minimum 1 lesson)

# ALPINE ESSENTIALS



## RESORT ENTRY PASS

**\$22**

Resort Entry is a requirement to gain access to the resort. Everyone in your group must have a resort entry pass.

## ONE DAT LIFT TICKET FOR SKI AREA ACCESS

**\$49**

Lift tickets are required for everyone to access the ski area (lifts and terrain). Only Alpine Ski Lessons, Snowboard Lessons and Downhill Packages include Lift Tickets. For every 7 students, a teacher/group leader receives a free lift pass to accompany students on the slopes.

## CATERING

**\$18 - \$22**

Breakfast, lunch and dinner can be organised for the duration of your camp. This will be organised through the Village Central Restaurant.

# ALPINE ESSENTIALS



## BUS LINES

Below is a list of bus lines that can travel to the snow at Mt Baw Baw. During Winter it is a legal requirement for the driver to have a Hazardous Area endorsement on all vehicles that carry more than 12 passengers.

### **Warragul Bus Lines**

- 03 5623 5377
- [www.warragulbuslines.com.au](http://www.warragulbuslines.com.au)

### **Melbourne Bus Co.**

- 1300 323 160
- [www.melbournebuscompany.com.au](http://www.melbournebuscompany.com.au)

### **Melbourne Bus Charters**

- 03 9393 1399
- [www.melbournebuscharters.com.au](http://www.melbournebuscharters.com.au)

### **Melbourne Bus & Coach**

- 03 9555 2727
- [www.melbournebusandcoach.com.au](http://www.melbournebusandcoach.com.au)

## RENTALS

The resort operated Village Retail & Rental Store primarily serves public bookings -Please contact these private ski hire businesses.

### **Baw Baw Ski Hire - On Mountain**

- (03) 5165 1120 | [bawbawskihire.com.au](http://bawbawskihire.com.au)

### **Erica Ski Hire - Erica, VIC**

- 03 5165 3353 | [info@ericaskihire.com.au](mailto:info@ericaskihire.com.au) | [ericaskihire.com.au](http://ericaskihire.com.au)

## ACCOMMODATION

If you plan a trip to Mt Baw Baw, you can let your students stay overnight on the mountain. There are several group-friendly ski lodges available at very competitive prices. All lodges are within the Mount Baw Baw resort and are only a short walk from winter activities. If you need more information about the lodges, you can visit <https://www.mountbawbaw.com.au/accommodation> for further details.



# MT BAW BAW OWNED ACCOMMODATION

## BUNERONG LODGE

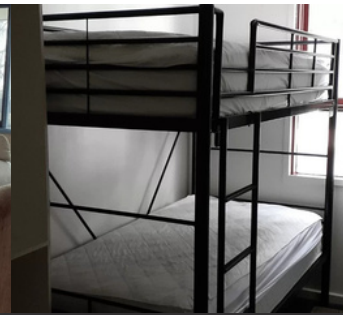
\$50

Group Capacity: 11

Check In: 3PM

Check Out: 10AM

Located close to the ski lifts, this cosy lodge offers private accommodation for groups of up to 13 people. With six private bedrooms, femal and male bathrooms, drying room, laundry, fully equipped kitchen, a spacious dining area, and a comfortable lounge with a flat-screen TV, Bunerong is ideal for small groups.



## SITE 11 LODGE

\$50

Group Capacity: 7

Check Out: 5:00PM

Check In: 3:00PM

Site 11 Lodge is a spacious alpine lodge featuring four private bedrooms, each with its own en-suite bathroom. Sleeping up to 12 guests a tri-bunk in each room. it's perfectly positioned above Café 11 with scenic views of the Frosti Frog Toboggan Park. located near Village Central Restaurant and the Mueller's Trail Head, Site 11 Lodge is ideal for small groups.



## FROSTI LODGE

\$50

Group Capacity: 17

Check Out: 12:00PM

Check In: 5:00PM

Frosti Lodge is a large spacious lodge. It has 8 private bedrooms, shared bathrooms and sleeps up to 17 people. The lodge has a large kitchen and open plan living, is centrally heated, has a large drying room and flat screen TV and DVD facilities.



# ALTERNATIVE ACCOMMODATION

Please contact the below accommodation directly

## EDSKI LODGE



[www.edski.com.au](http://www.edski.com.au)

## EVEREST



[www.everestlodge.com.au](http://www.everestlodge.com.au)

## DU NORD



[www.dunordskiclub.com.au](http://www.dunordskiclub.com.au)

## SKALI



[www.skali.com.au](http://www.skali.com.au)  
[Skalibookings@gmail.com](mailto:Skalibookings@gmail.com)

# ALTERNATIVE ACCOMMODATION

Please contact the below accommodation directly

## GAFIA LODE



[gafia.com.au](http://gafia.com.au)

## JOHN GARDINER



[www.johngardinersc.com](http://www.johngardinersc.com)

## W.F WATERS



[www.bawbawrovers.com](http://www.bawbawrovers.com)

## SAAC



[scoutsvictoria.com.au/about-us/campsites/scout-alpine-adventure-centre](http://scoutsvictoria.com.au/about-us/campsites/scout-alpine-adventure-centre)

## LONSDALE



[www.guidesvic.org.au/our-spaces/our-venues/lonsdale-ski-lodge](http://www.guidesvic.org.au/our-spaces/our-venues/lonsdale-ski-lodge)